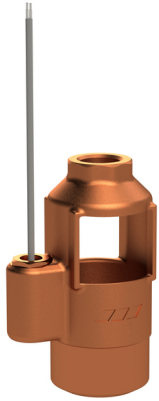


# KHS free drain with overflow sensor, figure 688 00

## Product Features



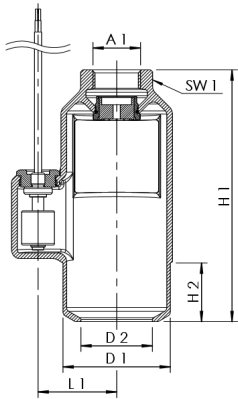
- to protect against overflow due to drain block
- wetted metal parts made from dezincification-free and corrosion-resistant gunmetal, resistant against aggressive water
- easy maintenance while installed
- for connection to KHS control systems, KHS timer set and leak detection systems
- for use in combination with KHS quarter turn stop valves
- female pipe thread
- free drain according to EN 1717 with integrated overflow sensor
- overflow sensor as NCC in delivery status, can be changed to NOC when turned
- for vertical installation

## Standards and Approvals

- WRAS approval
- according to accepted materials list from German environmental agency
- ÜA-Reg.-Nr. R-15.2.3-21-17048, WIEN-ZERT

## Technical Data

- protection class IP68
- switching capacity 230 V, 0,04 A
- length of connection cable 1 m
- wire cross section 2 x 0.25 mm<sup>2</sup>



part no.	for DN	A1	D1 (mm)	D2 (mm)	H1 (mm)	H2 (mm)	L1 (mm)	SW1 (mm)	kg
6880002000	15-20	Rp 3/4	75	50	176	41	55	48	1,554
6880002500	25	Rp 1	75	50	176	41	55	48	1,517
6880003200	32	Rp 1 1/4	75	50	176	41	55	48	1,437